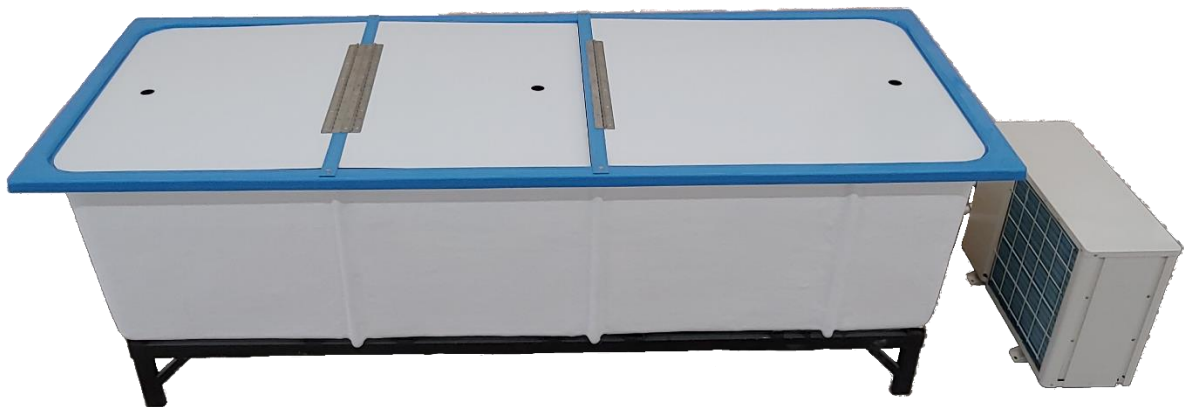




Piedmont Composites & Tooling Bait Tank Operation Manual



Date of Purchase: _____

Sales Order Number: _____



33 Lewittes Road Taylorsville, NC 28681

Phone: 828-632-8883 Fax: 828-632-5585

www.PiedmontComposites.com



Table of Contents

Table of Contents.....	2
Standard Bait Tank Features.....	3
Frequently Asked Questions.....	11
Before Starting the FilterMax.....	4
Filter Installation.....	5
PCT Bait Tank Pump Service Instructions.....	8
Trouble Shooting Tips.....	9
Bait Tank Limited Warranty.....	10

Standard Bait Tank Features



“Optional” OxyMax Divider

Powder Coated Steel Frame

1-1/2” PVC Drain Discharge

“Optional” Lid Max

Chiller Connect Fittings



850 with Filter Max, Chiller Max, & Lid Max

Turn 2 valves off and cross-over valve on to allow bait tank to circulate water with chiller removed.



Spray Bar

Overflow Port

Drain Discharge

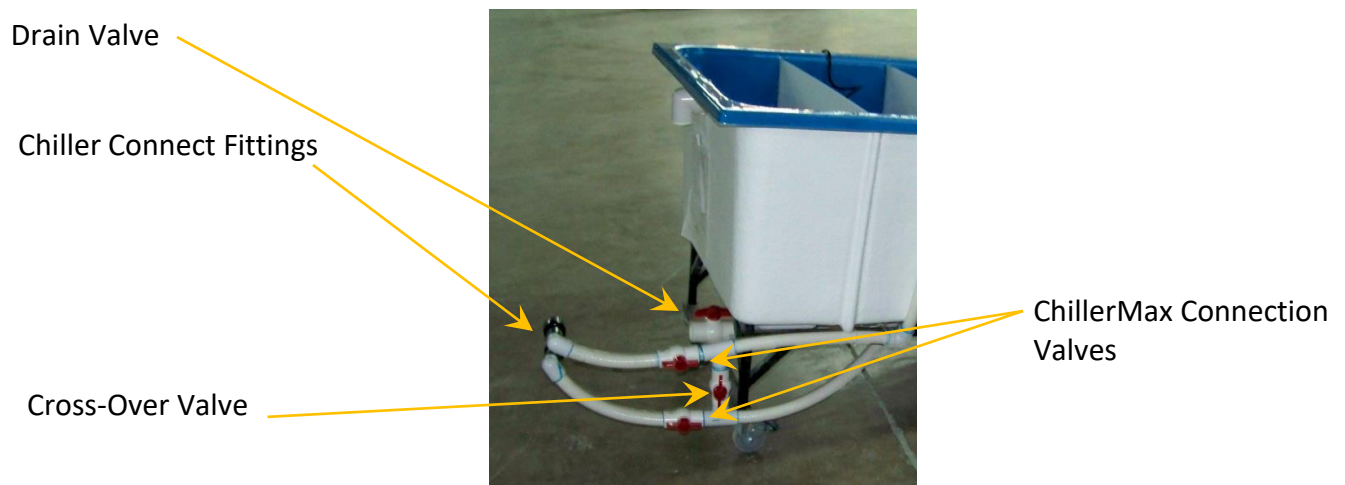
Model 650 with Filter Max

Before Starting the FilterMax

Read the Filter installation instructions before starting the FilterMax pump to ensure the filter assembly is correctly installed.

Begin by making sure the drain valve is in the closed position. Make sure the valve located before the pump is turned to the open position. This valve may be closed to remove the pump without draining the bait tank. This valve must be open to allow water to reach the pump, if this pump is operated without water, it will damage the pump and void the pump warranty.

If your bait tank is equipped with a ChillerMax system, please read the full ChillerMax Manual prior to installing the chiller system to the chiller connection fittings. The Chiller has a marked inlet and outlet on the unit. Ensure that the connecting fitting from the pump is connected to the inlet on the chiller and the fitting coming from the spray bar is coming from the outlet on the chiller. Check the two connection valves to make sure they are open and that the crossover valve is closed. The two chiller connection valves can be closed, and the crossover valve can be opened to allow water to circulate through the system without the ChillerMax. Open the crossover valve before closing the chiller connection valves, if all 3 valves are closed at the same time, water will not be able to circulate, and the added back pressure can damage the pump seal.



Begin filling the bait tank with water. When the bait tank is full, approximately 4" to 6" below the top of the tank, plug the 120v pump into a GFCI protected outlet. The pump will start to circulate as soon as it's plugged in.

During initial startup and for a satisfactory time period after, continue to observe that all is working as expected.

Caution: Do Not operate the pump without water inside the tank. This will damage the pump and void the warranty.

Filter Installation

1. Locate the components for the FilterMax filtration system. (1) Velcro bag, (2) 1 pound bags of carbon, and (2) FilterMax media pads are included with the purchase of the FilterMax system.
2. Remove the preinstalled retaining bars and top grate from the filter compartment. The retaining bars are hard to slide, be careful not to lift up on the bars when sliding to remove.

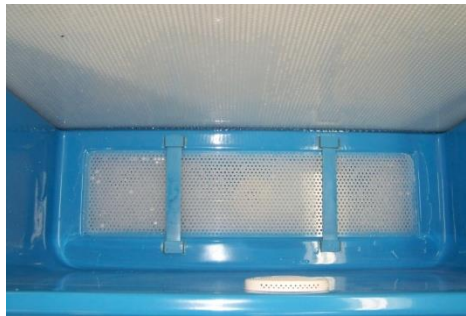


Figure 1: showing the retaining bars and top grate installed.

3. After the retaining bars are removed from the tank, remove the top grate.



Figure 2: Showing the filter compartment with only the bottom grate installed.

4. Place one media pad on top of the bottom grate.

5. Do not remove the bottom grate. The filter media pads will be placed on top of the bottom grate. Placing the pads below the bottom grate will allow the pump to pull the pads through the suction port thus damaging the pump and voiding the warranty.



Figure 3: showing a media pad laying on top of the bottom grate.

6. Fill the Velcro bag with 1 pound of carbon and close the bag with the Velcro strips and disperse the carbon throughout the bag.
7. Lay the Velcro bag on top of the filter pad that was installed in step 4.



Figure 4: showing the Velcro bag, filled with carbon on top of the first media pad.

- Place the second filter pad on top of the Velcro bag.



Figure 5: showing the second media pad on top of the Velcro bag.

- Reinstall the top grate and both retaining bars.

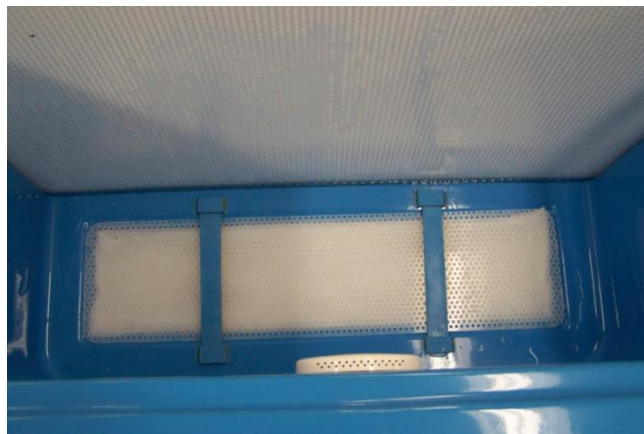


Figure 6: showing a completed filter assembly

PCT Bait Tank Pump Service Instructions

The bait tank pump you have purchased from Piedmont Composites and Tooling is equipped with a pump designed with oilable motor sleeve bearings. The Motor's sleeve bearings should be lubricated every 6 months with two to three drops of S.A.E. 20 weight non-detergent or a 3-in-one electric motor oil. The oil holes are located on the top at each end of the motor and covered with yellow plugs. Once the motor is oiled, replace the yellow plugs. Failure to oil the sleeve bearings every 6 months as recommended will void the pump warranty.



Figure 7: 3-in-One Motor Oil

Oil hole Locations



Figure 8: Oil hole locations on the FilterMax pump



Trouble Shooting Tips

Reminder: Any adjustments or modifications made to the pump, other than the suggestions listed below, will void the warranty of the pump. We suggest using the included pump cleanout system once a month. Bait can find its way into the pump, lines and even the spray bar.

Pump will not Operate.

- Check power.
- Use pipe clean out system.
 - 99% of calls with issues can be resolved by first using the included pump cleanout system.
- **ALTERING OR OPENING YOUR PUMP IN ANYWAY WILL VOID YOUR WARRANTY**

Pump is not circulating water.

- Check power.
- Use pipe clean out system.
 - 99% of calls with issues can be resolved by first using the included pump cleanout system.
- **ALTERING OR OPENING YOUR PUMP IN ANYWAY WILL VOID YOUR WARRANTY**

Tips for keeping your system working properly and your bait healthy.

- Use the included pump cleanout system once a month.
- Oil your pump every six months.
- Change your filters on a regular basis.
- Make sure filters and screens are well secured in place to prevent bait from getting into the circulation system.



Bait Tank Limited Warranty

This is to certify that the fiberglass bait tank manufactured by Piedmont Composites & Tooling, (PCT) shall be warrantied for a period of (1) year for leaks or defects in material and workmanship. This warranty begins on the date of purchase. **Note:** See below for Factory Installed filter max pump warranty.

If the bait tank should become defective, Piedmont Composites & Tooling has the option of making the repair by qualified personnel at no expense to the customer or furnishing a new bait tank of the same model. Liability is limited to the original purchase price of the product and shall not include the cost of removal, options purchased, shipping, re-installation or any other costs not expressed in this warranty.

This warranty does not cover damage or failure caused by acts of God, exposure to harsh chemicals, improper installation, fire, excessive water temperature, improper maintenance, or improperly installed accessories. All accessories, including pump, drain, etc. are covered by the manufacturer and not PCT. Proof of purchase must be presented with any claim. **Note:** Optional Bait Tank Lid is not warrantied for corrosion.

Factory Installed Filter Max Pump Warranty

Each Piedmont Filter Max Bait Tank is flow tested at the factory prior to shipment. In the unlikely event that your pump does not work when installed, our warranty is simple. If your filter max pump does not work correctly, simply call 828-632-8883 and speak with our service technician. The service technician will trouble shoot the pump and determine if everything is installed correctly. If the pump still does not work, we may ask you to ship the pump back for closer inspection or PCT may ship you a new pump. We will ask for a credit card number to be used only if the pump is not returned to us in 5 business days from receiving your new pump or if the unit was improperly installed, operated, or damaged. Your replacement unit will be shipped immediately. When it arrives, simply disconnect your existing unit and place it in the new unit box for return shipment. We will send you a call tag for UPS to pick up the defective unit.

Each Filter Max Pump is warrantied for a period of (1) year from the purchase date.

***ALTERING OR OPENING YOUR PUMP IN ANYWAY WILL
VOID YOUR WARRANTY***



Frequently Asked Questions

1. How often should the filter materials be changed?

Filter media pads should be removed from the tank and rinsed off in the sink every few days. Media pads should be replaced once they no longer come clean when rinsed off. Media pads will last longer the more frequently they are rinsed off.

2. What type and how much bait can be put in this tank?

PCT manufactures and distributes fiberglass bait tanks. Questions about bait types and quantities should be directed to your local bait dealer. They will be able to accurately answer this type of question.

3. Can the tank be used to continuously circulate fresh water from an outside water source?

The FilterMax system is designed to operate as a contained system and will not pull or circulate water from a pond, lake, or marina. The tank can be purchased as a tank only and used to circulate fresh water from the source. However, we do not sell the equipment nor give instructions on how to set up the tank in this manner.

Bait Tank Clean Out System Operation Manual

Piedmont Composites & Tooling has developed a de-clogging system for our bait tank line that will help get your system circulating water in the rare occurrence that the electric pump impeller becomes stuck or clogged with debris. Essentially, it is a reverse flow system that will clear obstructions from within the pipe or stuck in the impeller.

Important

- PCT recommends removing bait and draining the tank before attempting to de-clog the bait tank, however this is not required.
- Never stick or force anything into the pump.
- Always unplug the system from the power source before doing any work on the bait tank or the system including but not limited, to the electrical pump and ChillerMAX if installed.
- Never open or disassemble the electrical pump.
- Be careful when threading plugs and hose not to misalign, strip, or overtighten.
- Not following any of the above directions will void your warranty.
- Call 828-632-8883 for technical service if the issue cannot be resolved.

Parts included in the system (see Figure 1):

1. Screw plug (1) – To shut off one side of the spray bar.
2. Garden hose adapter (1) – To be attached on the spray bar opposite of the screw plug.
3. Screw plug with extended handle (1) – To be attached to the drain inside the bottom of the tank leading to pump.

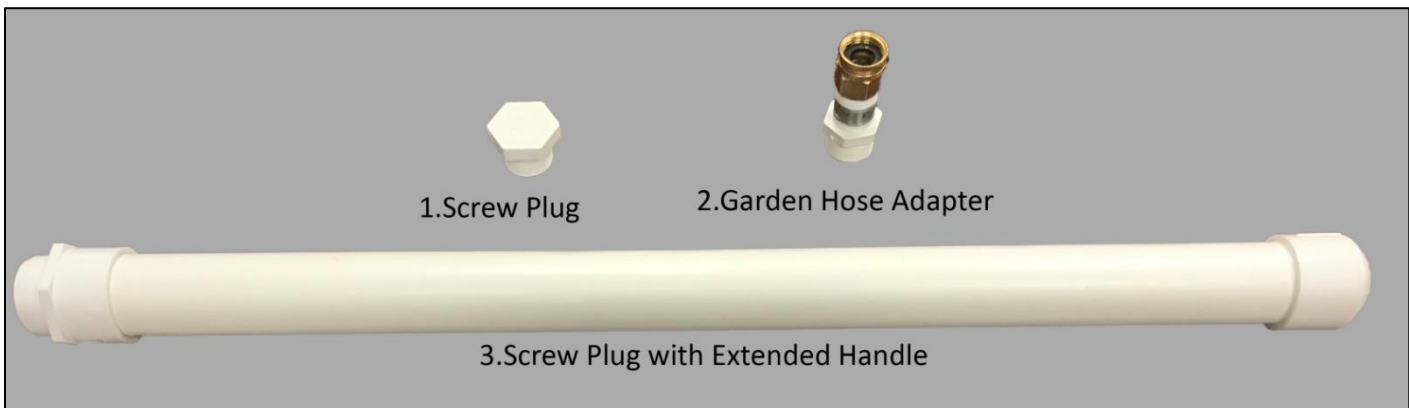


Figure 1 – Components included

Items needed that are not provided by PCT:

1. Five-gallon bucket(s) – To catch water and obstructing material.
2. Standard garden hose
3. White Plumbers tape not required.

Instructions:

1. Turn system off and unplug from power source.
2. Remove all perforated grates, filter media pads, carbon bags, and drain screen leading to the pump drain in the bottom of the tank. See Figure 2.
3. Remove both ends of the spray bar (located at the top of the tank) by turning the bar in a counter clockwise direction. See Figure 2.



Figure 2 – removing the spray bars and the filter components including the drain screen.

- Carefully attach the screw plug with extended handle into the drain inside the tank and attach the screw plug and the garden hose adapter to opposite ends of the spray bar using a clockwise motion until a good seal is made. Do not over-tighten. See Figure 3.

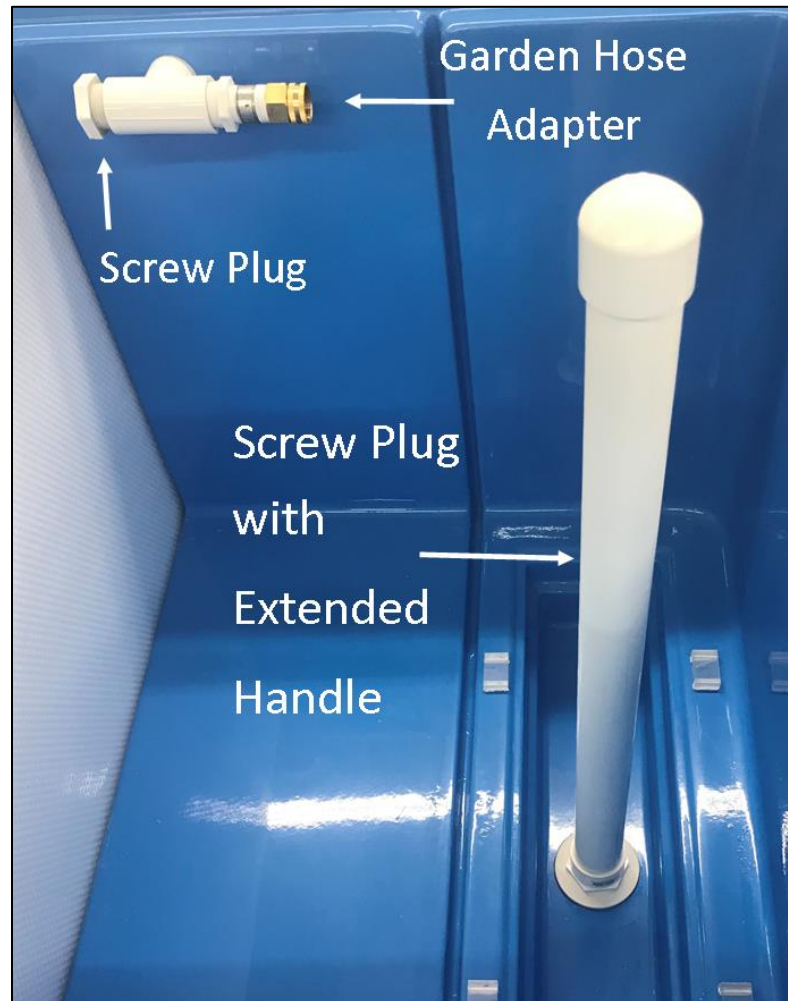


Figure 3 – image of the components installed.

- Attach the garden hose (not provided) to the adapter that is attached to the spray bar.
- Place five-gallon bucket or other at end of the drain pipe underneath tank to catch water and debris.
- Open drain valve to allow the water to flow through the piping and pump system. See Figure 4.



Figure 4 – Drain Valve Open Figure 5 – Drain Valve Closed

8. Turn on the water source to the garden hose.
9. When the obstruction is removed, close the drain valve, see Figure 5. The drain pipe valve may need to be closed and the procedure repeated several times to fully clear the obstruction.
10. Turn off the water pressure at the water source.
11. Remove the screw plug with extended handle from the drain inside the tank using a counter clockwise motion and replace the perforated grates, carbon bag, filter media pads, and drain screen be certain all filter components are re-installed properly. See the FilterMax operation manual for instructions.
12. Remove garden hose adapter and screw plug in a counter clock wise motion
13. Replace spray bars in a clockwise motion, until a good seal is made. Be careful not to overtighten.
14. Place white plumbers' tape on the treads of the spray bars to prevent leaking.
15. Plug the system into the power source and start the system.

If this procedure does not solve the issue, please call us at 828-632-8883 for assistance.

Thank you for purchasing a Piedmont Composites & Tooling bait tank. Happy Fishing!